



Addison Grove, London, W4
Guide Price £1,500,000

WHITMAN & CO.
SALES · LETTINGS · COMMERCIAL

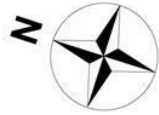


An exceptionally rare opportunity to buy this three-bedroom garden flat, set within a majestic Grade II listed property, featuring private landscaped gardens and gated off-street parking on the prestigious Addison Grove in Bedford Park. This elegant home offers a 16' reception room, a spacious master bedroom, luxury bathroom, two additional bedrooms, an ensuite shower room, an 18' bespoke kitchen/breakfast room, and a utility room. The property also boasts polished hardwood floors, a wealth of original features, and includes a share of the freehold. Ideally located on one of Bedford Park's premier roads, it provides close proximity to the vibrant shops, bars, and restaurants of Chiswick High Road, as well as convenient access to tube and bus networks.

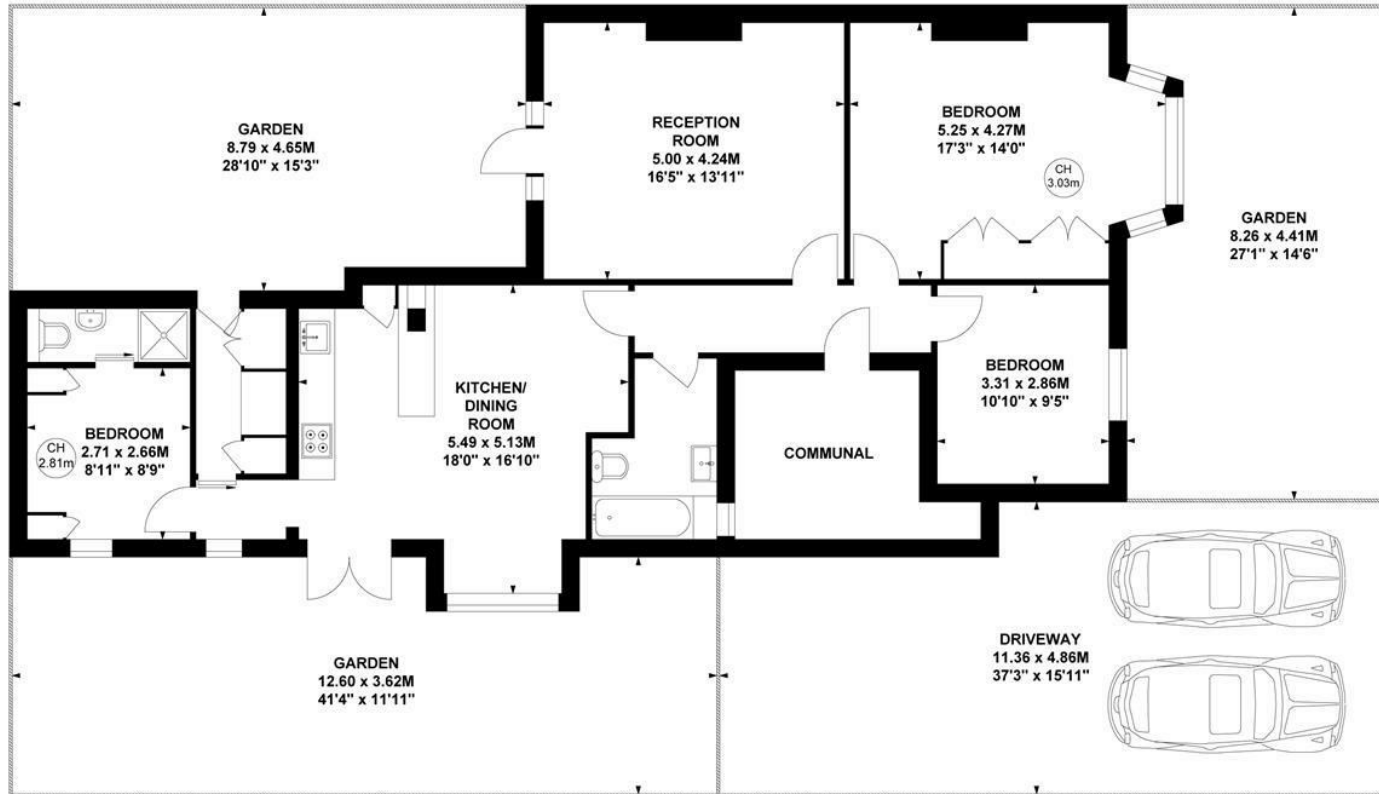


Addison Grove, W4

Approximate gross internal area
104.89 sq m / 1129 sq ft



Key :
CH - Ceiling Height



Ground Floor

Not to scale, for guidance only and must not be relied upon as a statement of fact.
All measurements and areas are approximate only

- Bedford Park Conservation Area
- Gated off-street parking
- Immaculately presented

- Rare Grade II Listed Property
- Private garden
- Host of original features

Tenure - Leasehold with Share of Freehold
Lease length - 990 Years remaining
Ground Rent - Peppercorn
Service charge - £1250 pa
Local authority - Ealing
Council tax - Band E

